

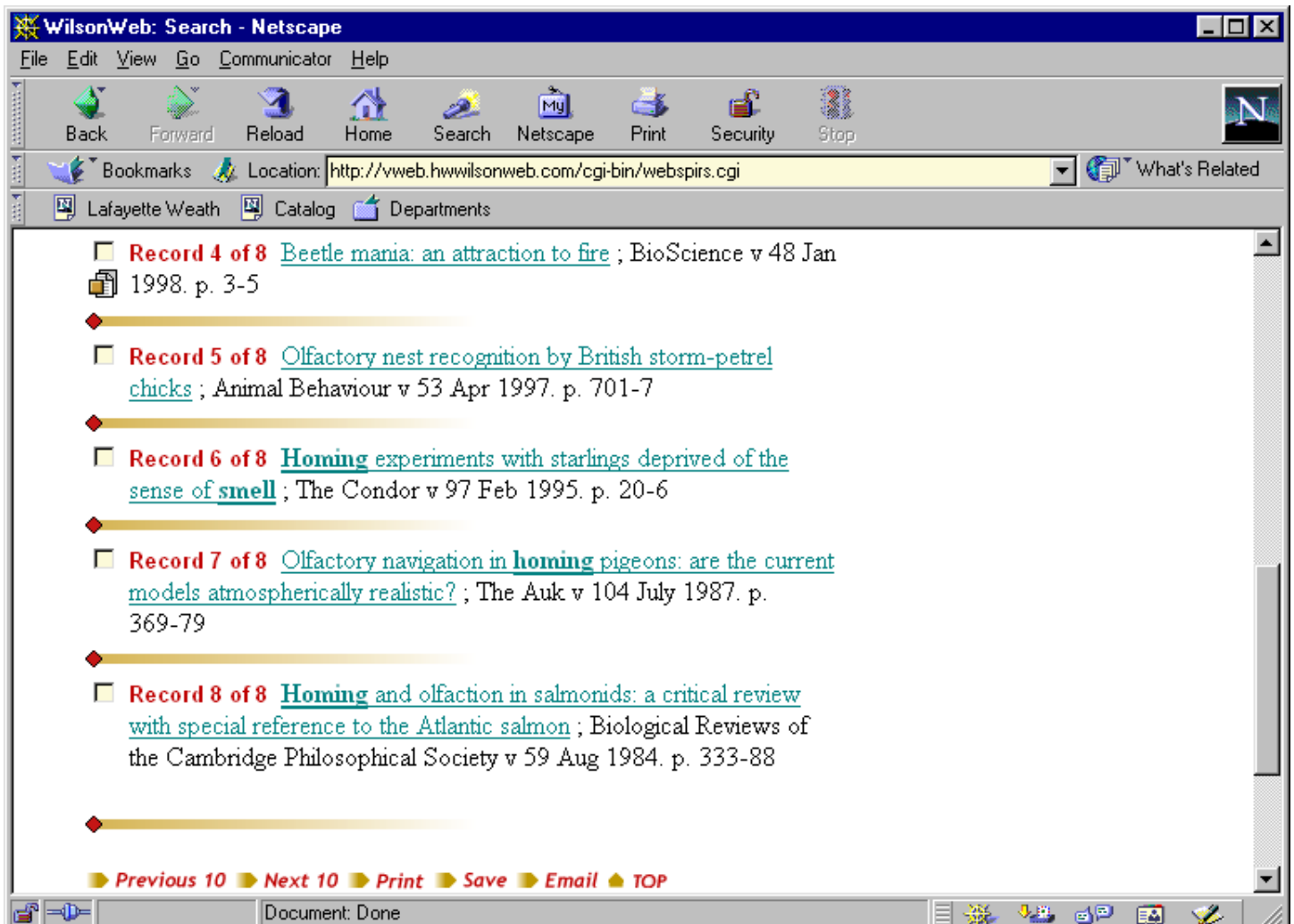
BIOL 122 - Homework Assignment, Part II

Using the library computer resources locate references on a topic related to the journal article read for Part 1. **Hand in a holdings printout for each reference you find.**

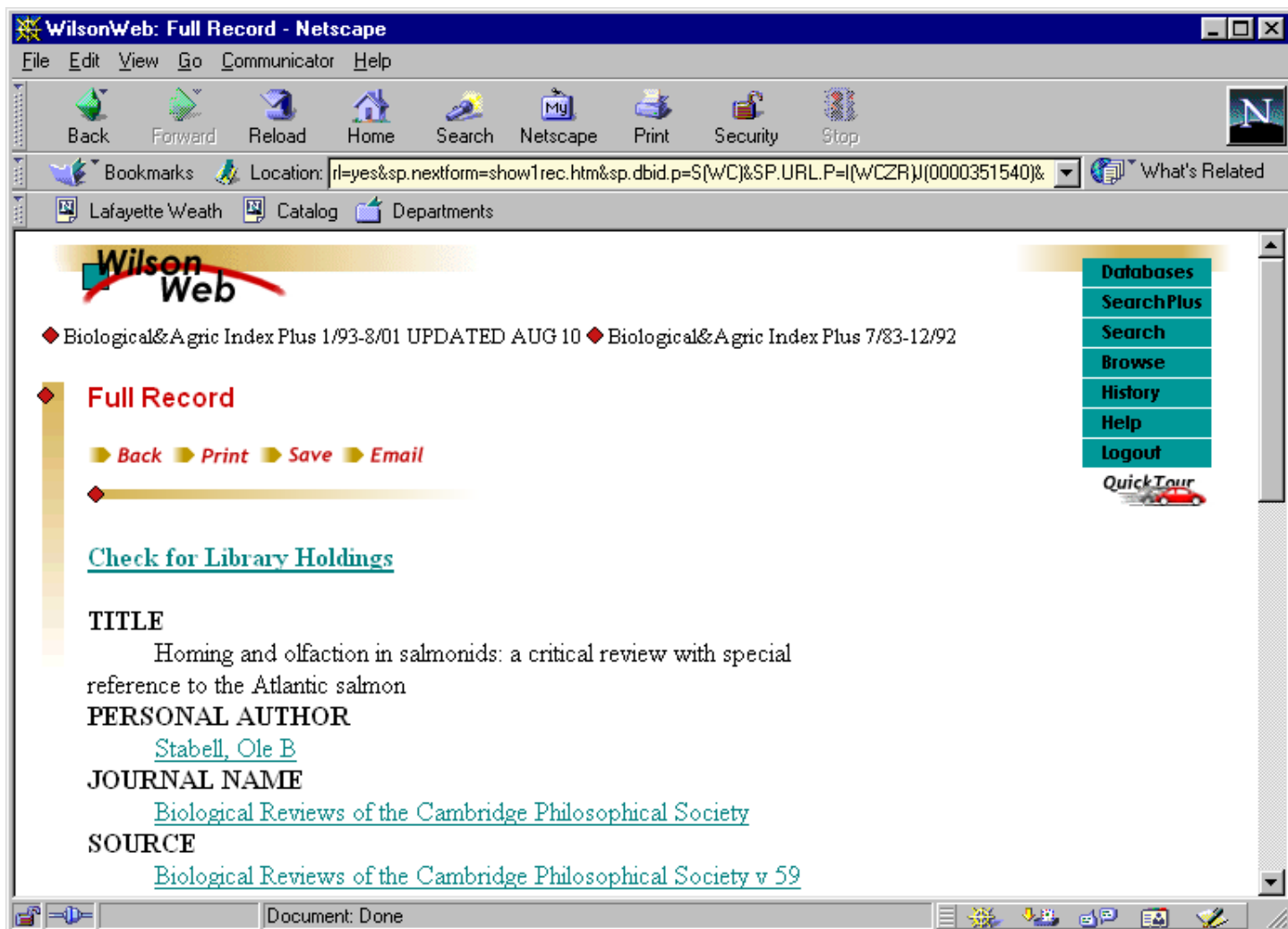
Journal article: "Homing Experiments with Starlings Deprived of the Sense of Smell"

STEPS IN COMPLETING THE ASSIGNMENT

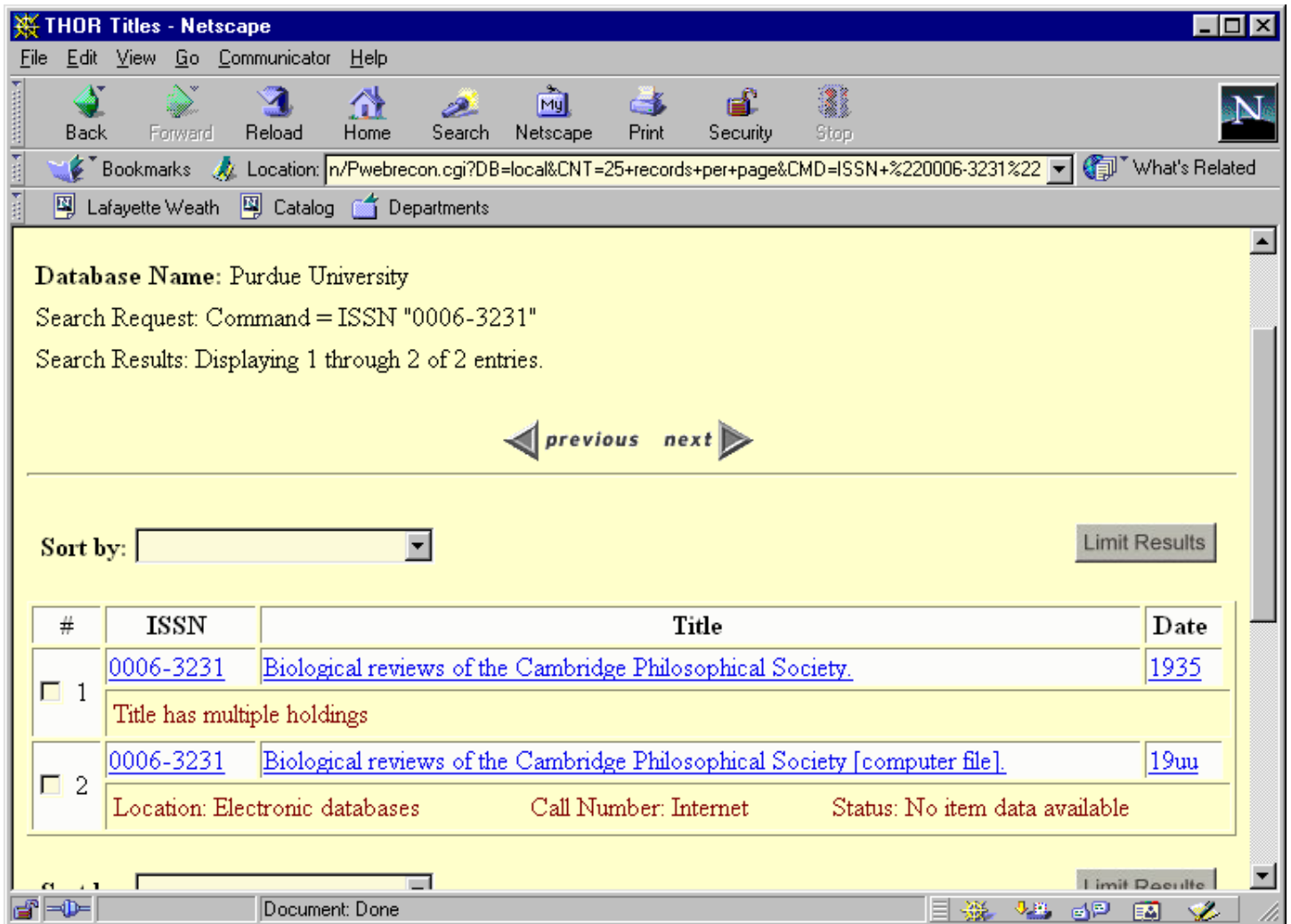
- (1) Go to THOR, the Purdue Libraries homepage. URL: <http://www.lib.purdue.edu>
- (2) Click on Indexes.
- (3) Scroll down to "Biological & Agricultural Index" and click on the "WWW" link.
- (4) Select "Biological and Agricultural Index Plus", then click on "search" in the upper right corner of the screen.
- (5) In the search box enter a word or phrase (for example, homing and smell), describing an idea in the starling article; then click on "Search Now."
- (6) Scroll down the list of records to find a reference you like (Don't choose the record for the article you've already read). Suppose article No. 8 on olfaction in salmon is the one you select.



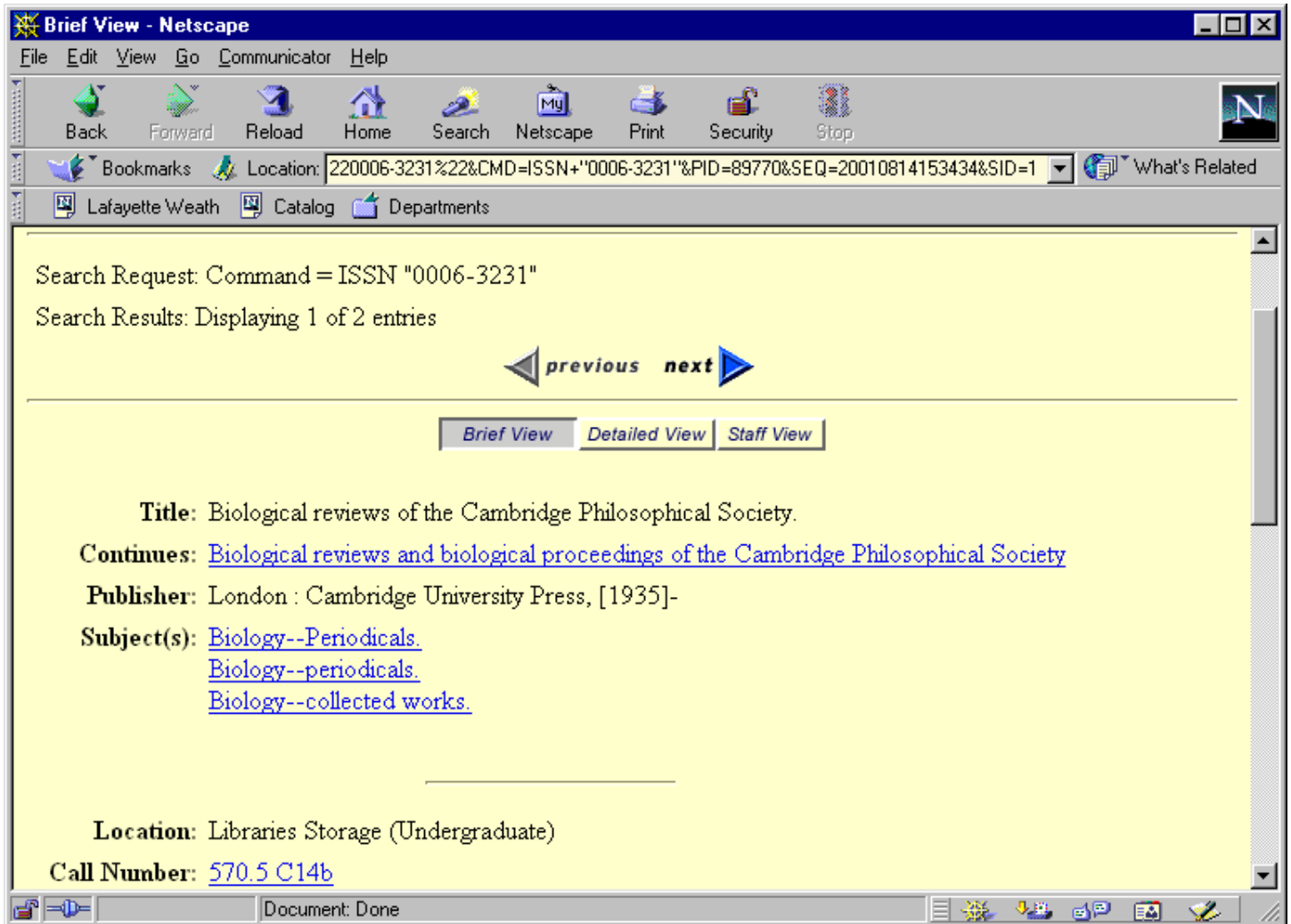
- (7) Click on the title of the article to bring up a more detailed version of the record.



(8) Then, click on the link, [Check for Library Holdings](#), above the record to see if Purdue has the journal containing the article. A new Web window will open showing you that there are two records for the journal, *Biological Reviews of the Cambridge Philosophical Society*, in the Purdue Libraries online catalog. This is not the case for all journals. For some, clicking on [Check for Library Holdings](#) will take you directly to the record that describes the journal and its holdings.



- (9) Click on the title of the first entry to bring up the description of the print version of the journal and its holdings.



- (10) Scroll down the page and you will find what volumes and issues, that is, the "holdings," a library has.
- (11) Print the page by clicking "Format for print/save" button at bottom of page. Then click on the printer icon at the top of the screen or open File and click on "Print."
- (12) To find another reference click on the "back" button of the browser as many times as necessary to return to the list of records in "Biological & Agricultural Index."