

If this does not display correctly, please visit <http://www.lib.purdue.edu/inside/> to read it online.

Previous issues may be found at <http://www.lib.purdue.edu/inside/archive.html> and the Libraries Intranet at <http://intranet.lib.purdue.edu/display/HOME/INSIDE>



A STAFF E-NEWSLETTER JUNE 24, 2015



## DIGITIZING A UNIQUE COLLECTION

BY VICKI KILLION



Digitizing print collections unique to Purdue has been a major goal of the Purdue Libraries for many years, but in September 2014 work began on digitizing a very unique collection — the Eli Lilly collection of type specimens. (A type specimen is a specimen, or set of specimens, on which a botanist or mycologist base their description of a new species.)

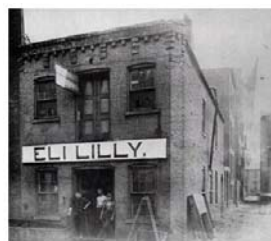
Purdue's Kriebel Herbarium acquired the Lilly collection in 2012. In 2014, Marianne Stowell Bracke (project director), in partnership with the Herbarium staff, received an ILMS/LSTA grant to digitize the Lilly collection and the Herbarium's historical correspondence for inclusion in the state's *Indiana Memory* project.

Digitizing the specimens provides access not only to medicinal plant and drug discovery history, but also to species distribution, land use history and collector history. Many of the specimens were originally purchased by Lilly as sets from prolific collectors. These specimens document botany across America and other parts of the world from the 1800s to the early 1900s. Each specimen in the Lilly collection was officially accessioned into the Kriebel Herbarium. Once the data has been evaluated, the records will be available through Purdue e-Archives and the Herbarium website. Until then, sample images can be viewed on the [Purdue Herbaria](#) website.

The Herbarium's historical correspondence documents the beginnings and early development of the herbaria collections at Purdue, various events in the Department of Botany and Plant Pathology and professional and personal details of prominent faculty. The images and data created from this collection have been added to [Purdue e-Archives](#).

The project was carried out in Kriebel by undergraduate students trained in herbarium digitization practices, including using the HerbScan system, specimen photography software, data entry and georeferencing. They also received training in specimen handling and using botanical reference materials. Quality control was provided by the digitization manager, Jordan Bailey.

Spring Fest 2015 participants were among the first to view the specimen images and the physical collections. The success of that event has encouraged the Kriebel staff to plan future herbarium displays.



## CONTENTS

- [Digitizing a Unique Collection](#)
- [Purdue Libraries at Open Repositories](#)
- [Harvard Purdue Data Management Symposium](#)
- [Who do You Know Who's Received a Libraries SMILE?](#)
- [LCSSAC Elects New Officers](#)
- [Around the Libraries](#)
- [Strategic Goal Icons](#)
- [Off the Shelf](#)
- [Congratulations](#)
- [Events and Exhibit](#)
- [Publications and Presentations](#)
- [Libraries in the News](#)
- [SMILE Award link](#)
- [What's Cooking?](#)
- [Copy Deadline](#)

## STRATEGIC GOAL ICONS

You will notice the use of these icons before the article that are symbolic of our Libraries strategic goals.



**LEARNING:** Libraries faculty lead in information literacy and learning space implementation, research and scholarship.



**SCHOLARLY COMMUNICATION:** Libraries facilitate and



## PURDUE LIBRARIES AT OPEN REPOSITORIES

BY MICHAEL WITT

The International Conference on Open Repositories has been held in past years in Helsinki, Madrid, Prince Edward Island, Edinburgh and Sydney, so we were fortunate to have it take place in our backyard in Indianapolis in June. In addition to sponsoring the conference, Purdue Libraries made a good showing with faculty and staff representing all three of our repositories ([Purdue e-Pubs](#), [Purdue e-Archives](#), and [PURR](#)) as well as the University Copyright Office who attended and participated. Michael Witt served as a reviewer for the program and chaired a session on repository tool integration and international repository networks and Donna Ferullo presented on a panel, "DMCA Takedown Notices: Managing Practices From the Perspective of Institutional Repositories."



Purdue Libraries repository participants: Michael Witt, Dave Scherer, Donna Ferullo, Cliff Harrison, Carly Dearborn, Neal Harmeyer, and Standa Pejša

In addition to sharing our work at Purdue with colleagues from around the world, we covered most of the conference tracks, learning the latest developments and practices related to repositories. Neal Harmeyer was impressed by the focus on ongoing education and professional development for the variety of professionals in attendance, while Standa Pejša appreciated the hands-on workshops and "24/7" lightning talks mixed in with regular presentations. Cliff Harrison commented that the keynote by Google's Anurag Acharya was "enlightening in terms of how web crawlers interact with repositories. Gaining that understanding along with a set of best practices to follow provided a takeaway that can be implemented to help optimize discoverability of repository content from the web." Carly Dearborn enjoyed learning how other institutions were approaching difficult issues surrounding access to sensitive archival materials. She also enjoyed getting an international perspective on issues relating to data management and access. David Scherer really enjoyed learning how other institutions structure and operate their institutional repositories. He noted that while we operate our own unique repositories, it's nice to know that we all face the same broad issues and challenges when providing access and dissemination to our institution's research and scholarship. In the end, we're all in this together."

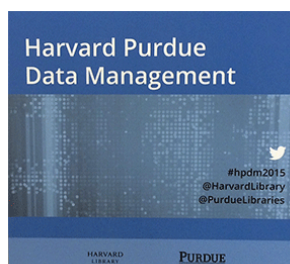
Papers and plenary presentations from Open Repositories can be found on the [conference website](#).



## HARVARD PURDUE DATA MANAGEMENT SYMPOSIUM

Harvard Library and Purdue University Libraries collaborated on and hosted a two-day data management symposium at Harvard on June 16-17. The focus of the symposium centered on new roles for libraries as part of data management strategies during all parts of the research cycle. Attendees at the Symposium came from across the country.

The Symposium incorporated visionary ideas, new concepts and inspirational speakers. The purpose was to promote data awareness



enhance the continuum of the scholarly communication process.



### GLOBAL CHALLENGES:

Libraries faculty lead in international initiatives in information literacy, e-science, information access and data management and collaborate on Purdue's global initiatives.



### INFRASTRUCTURE:

Libraries staff working together to enhance the users experience, raise awareness of Purdue Libraries and recognize the continued learning and successes of our knowledgeable staff.

## OFF THE SHELF

### Continuing

- Engineering Information Specialist (2 Faculty positions) [Check the Libraries Employment Opportunities page](#). Accepting applications; review of applications has begun.
- Molecular Plant Sciences Information Specialist (Faculty) [Check the Libraries Employment Opportunities page](#). Accepting applications; review of applications has begun.
- Health Sciences Information Specialist (Faculty) [Check the Libraries Employment Opportunities page](#). Accepting applications; review of applications has begun.
- Digital Humanities Specialist (Faculty) [Check the Libraries Employment Opportunities page](#). Accepting applications; review of applications has begun.
- Web Application Developer (A/P) (Posting 1500201). [Check the Libraries employment opportunities page](#). Accepting applications; review of applications has begun.

### New Staff

- Alyssa Edmondson, Libraries Instructional Developer, PSET

## CONGRATULATIONS

**Tao Zhang's** and graduate research assistant, Marlen Promann's project, *Applying the Hierarchal Task*

and integration of library services into the research cycle, and to demonstrate that data management is not simply about compliance but also about building relationships and engaging stakeholders at all levels.

Well-managed data can allow researchers to develop new lines of inquiry that would not have been possible previously and to communicate their work in innovative ways; librarians can contribute to this effort.

“The invitation by Sarah Thomas, my counterpart at Harvard, to collaborate on this Symposium is recognition of the high regard Purdue Libraries is held for its leadership role in Data Management. I was very proud of the presentations and participation of Purdue colleagues,” said Jim Mullins.

The Symposium was planned by a joint committee made up of Harvard and Purdue individuals, from Purdue it included Paul Bracke, Scott Brandt and Michael Witt. Others who participated in or attended the Symposium from Purdue included, beyond those mentioned above and below were: Amy Barton, Marianne Stowell Bracke, Carly Dearborn, Nastasha Johnson, Pete Pascuzzi and Line Pouchard.

The following day, Thursday, June 18, a workshop was held that brought together the folks from only Harvard and Purdue to explore in more detail specific challenges facing data management at the two universities. Presentations there were given by: Amy Barton, Scott Brandt, Marianne Stowell Bracke, Paul Bracke, Nastasha Johnson, Line Pouchard and Michael Witt. Contributors to the workshop included Carly Dearborn, Nicole Kong, Megan Sapp Nelson and Pete Pascuzzi.

Purdue University faculty members who presented at the symposium included:

**Introduction:** Data Management at Purdue for 10 years — A Similarity with the Travails of Odysseus?

- James L. Mullins, Dean of Libraries and Esther Ellis Norton Professor, Purdue University – <http://library.harvard.edu/harvard-purdue-data/intro>

#### “Research Data Management: Our Collaborative Future”

- Jeffrey T. Bolin, Ph.D, Associate Vice President for Research Centers, Cores, and Research Development Services and Professor of Biological Sciences, Purdue University – <http://library.harvard.edu/harvard-purdue-data/management>

#### “The Researcher’s Perspective”

- Sylvie Brouder, Professor of Agronomy, Purdue University – <http://library.harvard.edu/harvard-purdue-data/perspective>

#### “Internal Drivers: Researchers and Data”

- Sylvie Brouder, Professor of Agronomy, Purdue University – <http://library.harvard.edu/harvard-purdue-data/internal-drivers>

#### “Repositories Services”

- Michael Witt, Associate Professor of Library Science and Head, Distributed Data Curation Center (D2C2), Purdue University Libraries – <http://library.harvard.edu/harvard-purdue-data/repository>

Full details on the symposium can be found at: <http://library.harvard.edu/harvard-purdue-data>



## WHO DO YOU KNOW WHO'S RECEIVED A LIBRARIES SMILE?

BY NANCY HEWISON

A thank you, a word of praise, a smile — all are messages that can really make someone’s day. When you send such a message via the Libraries SMILE Program, it tells a co-worker that you appreciate something about them. It could be something they did, their positive attitude, their creativity, how they figured something out, the difference they made on a project, or the difference they make every

*Analysis Method to Discovery Tool Evaluation*, has been selected as the *Second Runner-Up* of the *LITA Contest: Great Library UX Ideas Under \$100*. The formal announcement will be made at LITA’s President’s Program at the ALA Annual meeting on June 28 in San Francisco.

<http://litablog.org/2015/06/congratulations-to-the-lita-ux-contest-winners/>

## EVENTS AND EXHIBITS

### First in the Field: Beginnings of the Nation’s First Computer Science Department

Archives and Special Collections  
March 16-July 24  
Monday-Friday 10 a.m.-4:30 p.m.  
HSSE Library 4th floor  
STEW

### Lafayette Farmers Market

Saturdays  
May 2-October 31  
7:30 a.m.-12:30 p.m.  
5th Street between Main and Columbia streets  
[More Information](#)

### West Lafayette Farmers Market

Wednesdays  
May 6-October 28  
3:30-7 p.m.  
Cumberland Park  
3065 North Salisbury Street  
[More Information](#)

### Purdue Farmers Market

Thursdays  
May 7- October 29  
11 a.m.-2 p.m.  
Memorial Mall  
[More Information](#)

## PUBLICATIONS AND PRESENTATIONS

**Sharon Weiner** presented “Planning Strategically! Make Your Library Essential by Institutional Alignment” at the 8th Library management Conference, Arcadia University (Pennsylvania). June 9, 2015.

Frank Scholze, Heinz Pampel, **Michael Witt**, Paul Vierkant and Maxi Kindling. “re3data.org: Registry of Research Data Repositories” at [CERN Workshop on Innovations in Scholarly Communication](#) (OA19), Geneva,

day.

How can you send a Libraries SMILE message? To find out, take a look at the article in the [April 15, 2015, issue of INSIDe](#). There, you'll also find out about the monthly drawing which results in a \$25 gift certificate, generously supported by the Dean, to one of the previous month's SMILE recipients. And to make it easy to send a SMILE to a fellow employee, you can use the [SMILE AWARD link](#) in the sidebar of every INSIDe issue, including this one.

Going back to the question posed in the title of this article, who do you know who's received a Libraries SMILE? As it turns out, quite a lot of people!

The list below covers the most recent year-and-almost-a-half of SMILE recipients. Some have gotten more than one SMILE. If you're someone who has both received and sent SMILES, you probably know that a SMILE can be as satisfying to send as to receive.

So, make two people very happy: Send a SMILE today!



### SMILE Recipients January 2014 — May 2015

Christine Abel*	Diana Grove	Rebecca Richardson
Elaine Bahler	Kaitee Hardesty	Catherine Fraser Riehle
Teresa Balsler	Neal Harmeyer	Matt Riehle
Marianne Stowell Bracke	Brad Heiss	Dan Rotello
Heidi Branham*	Emily Heitman	Cheryl Sagendorf
Teresa Brown	Nancy Hewison	Dave Scherer
Lori Bryant	Becky Hunt	Danielle Schiewer
Ashley Butler	Joette Hutchcraft	Stephanie Schmitz
JoAnne Carow	Kelley Kimm	Chelsie Schuette
Kristen Cash	Monica Kirkwood	Candy Scott
Frances Christman	Dean Lingley	Mary Segó
Lil Conarroe	Sue Long	Anna Seiffert
Becki Corbin	Elizabeth Lukens	Bryan Shaffer
Carly Dearborn	Jennifer Lynch*	Michael Solomon
Noel Diaz	Brenda Martin	Jill Stair
Dianna Deputy	April Maybee	Sharon Sturgeon
Tiffany Eakin*	Beth McNeil	Amy Storms
Angie Ewing	Brenda Meagher	Anna Subramaniam
Gene Ann Fausett	Ralph Mickey	Carole Tolley
Donna Ferrel*	Stephan Miller	Amy Van Epps
Donna Ferullo	Rachel Moore	Katie Van Kammen*
Karen Fields	Sammie Morris	Libby Wahl
Sandy Galloway	Jim Mullins	Sam Wehrspann
Kathy Garner	Ann O'Donnell	Dale White*
Amanda Gill	Heather Oakley	Bethany Whitford*
Dianna Gilroy	Laura Patnaude	Tonya Wichterman
LuAnn Gooden	Katherine Purple	Dacia Wiesler
Tracy Grimm	Lisa Purvis	Dan Yeoman

(Note: An asterisk indicates a SMILE recipient is no longer employed in Libraries)

Switzerland. June 18, 2015.

## LIBRARIES IN THE NEWS

**Lafayette Journal & Courier**, June 8  
[Unique Buildings and Renovations: Constructing on Active Learning Center, Honors College to ramp up this summer at Purdue.](#)

**Exponent**, June 8  
[What changes are coming with the Active Learning Center?](#)

## SMILE AWARD

[Submit your SMILE nomination here](#)

## WHAT'S COOKING?

**Grilled Zucchini Boats**  
 Visit the [Libraries Intranet](#)

## COPY DEADLINE

Copy for the July 8 issue is due by noon, July 6. Send to [tmabrown@purdue.edu](mailto:tmabrown@purdue.edu)



## LCSSAC ELECTS NEW OFFICERS

Libraries Clerical Service Staff Advisory Committee (LCSSAC) held its annual election of officers for the 2015-16 fiscal year. Beginning on July 1 the following officer positions will go into effect:

Chair — Dianna Deputy [deputy@purdue.edu](mailto:deputy@purdue.edu)  
 Vice Chair — Cheryl Oliver [csmith68@purdue.edu](mailto:csmith68@purdue.edu)

Web Assistant — Ann O'Donnell [atodonne@purdue.edu](mailto:atodonne@purdue.edu)  
Secretary — Roger Strater [hawken@purdue.edu](mailto:hawken@purdue.edu)

April Maybee, [amaybee@purdue.edu](mailto:amaybee@purdue.edu), and Dan Roltello, [drotello@purdue.edu](mailto:drotello@purdue.edu), fill the other two positions on LCSSAC.

If you have questions, concerns, suggestions etc., please feel free to send a LCSSAC LINK Letter to [lcssac@purdue.edu](mailto:lcssac@purdue.edu) or contact any representative. More information about LCSSAC can be found on the [Libraries' intranet](#).

Thank you to retiring members, Connie Richards and Allen Bol for their dedication to making LCSSAC a success.



## AROUND THE LIBRARIES

Nicole K. Zimmerman, Academic Regulations Specialist, provided information and instruction to Libraries staff members who hire student employees to ensure they are following FERPA (Family Educational Rights & Privacy Act) guidelines. The class was held in the HSSE Conference Room on June 19.



LIBRARIES *INSIDe* NEWSLETTER **June 24, 2015**, Volume 9: Number 13

Comments and suggestions are invited. Send information to Teresa Brown/INSIDe/STEW 264, 49-47178 or [tmabrown@purdue.edu](mailto:tmabrown@purdue.edu)

©2015 Purdue Libraries. All rights reserved.  
Please request permission before reprinting any portion of this newsletter

EA/EOU